

1. Decision Paths

Decision paths are picture representations of the steps to take in determining eligibility.

The diamond shapes  are questions or decision points. The rectangles  are action points,

There are 2 phrases that will help in making decisions

1. SNAP is always #1
2. The address is what matters.

1.1 SNAP is Always #1

More than 1 child in a household is on the direct certification list, but 1 is SNAP and the others are TANF: All are DC SNAP because SNAP is ALWAYS #1

1.2 The Address is What Matters

In determining eligibility by association, the only question that needs to be asked and answered is if the address is the address the same for all the children – are they living in the same household?

FIGURE 1 STUDENT LISTED ON STATE MATCH LIST

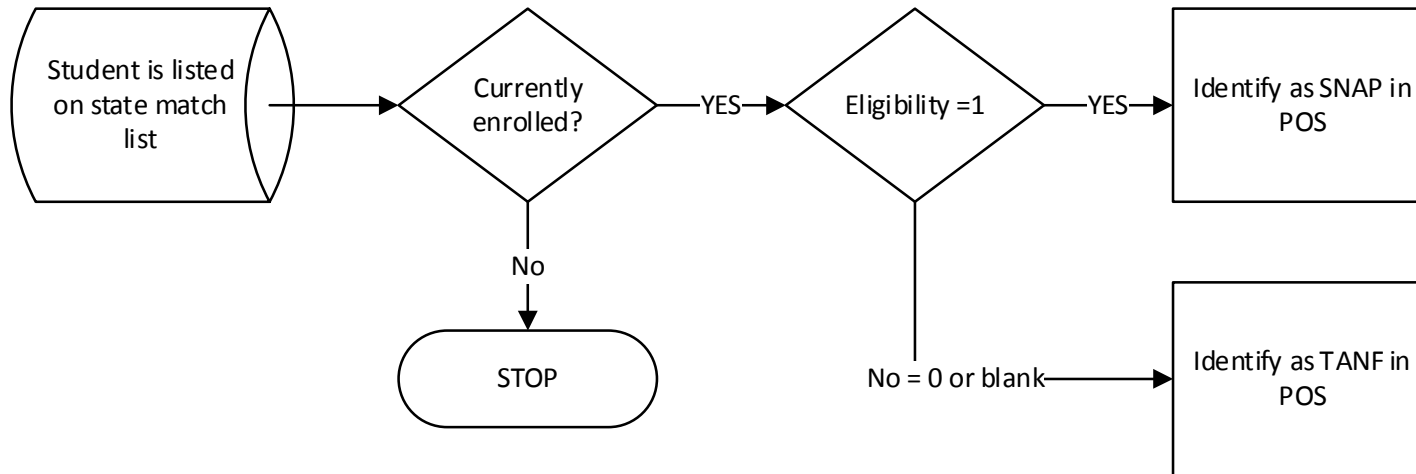


FIGURE 2 SIBLINGS IN SNAP AND TANF

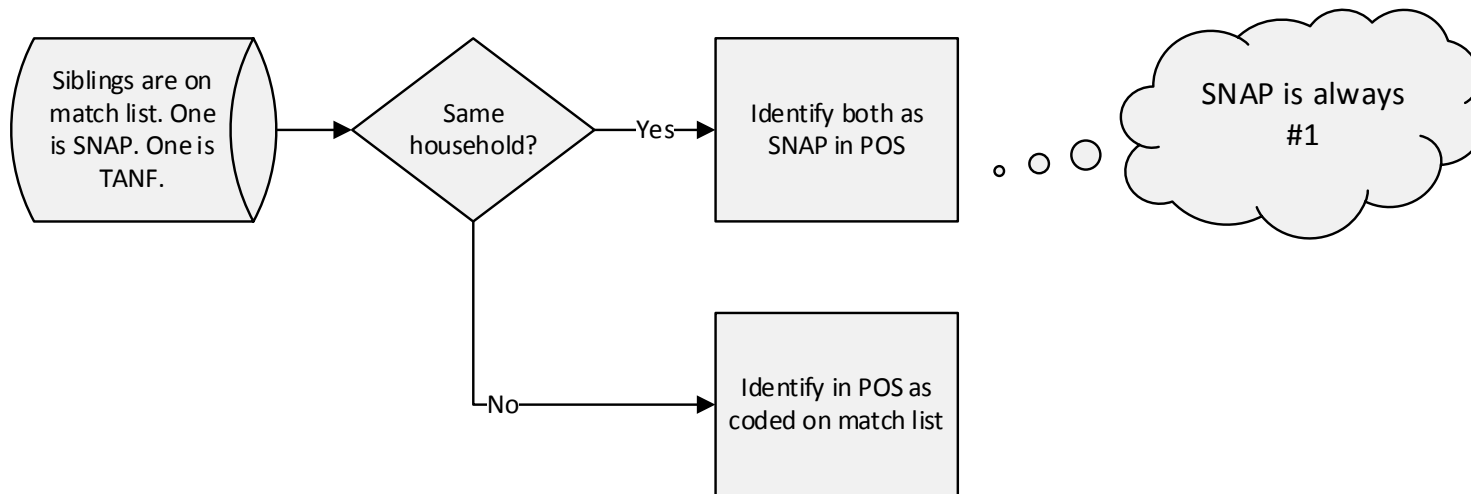


FIGURE 3 ELIGIBLE BY ASSOCIATION

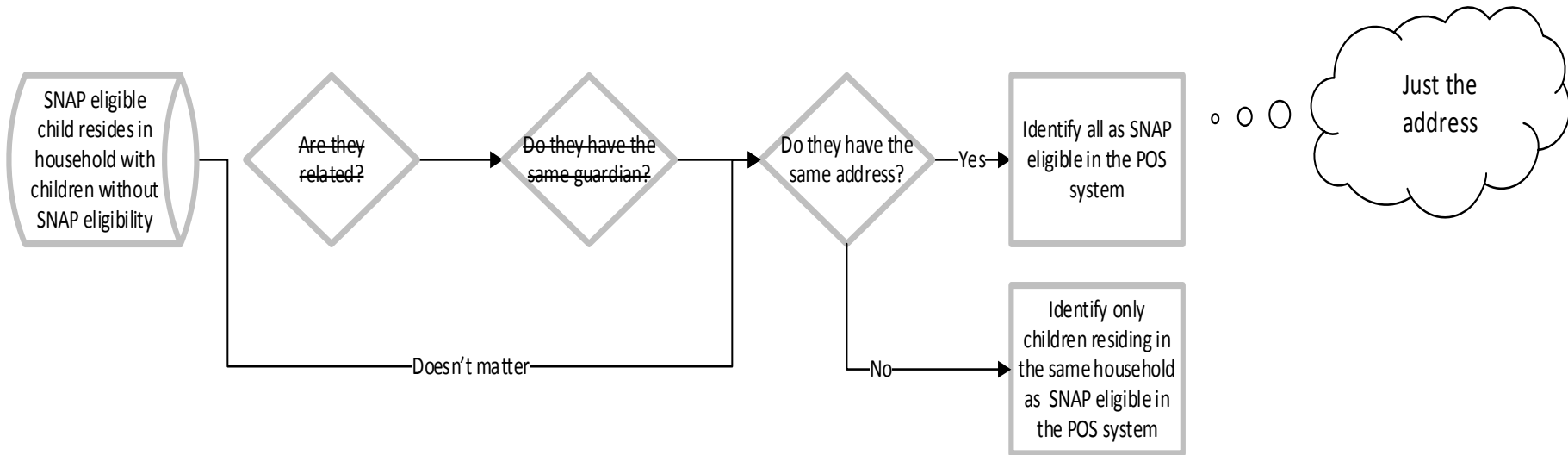


FIGURE 4 EDG NUMBER

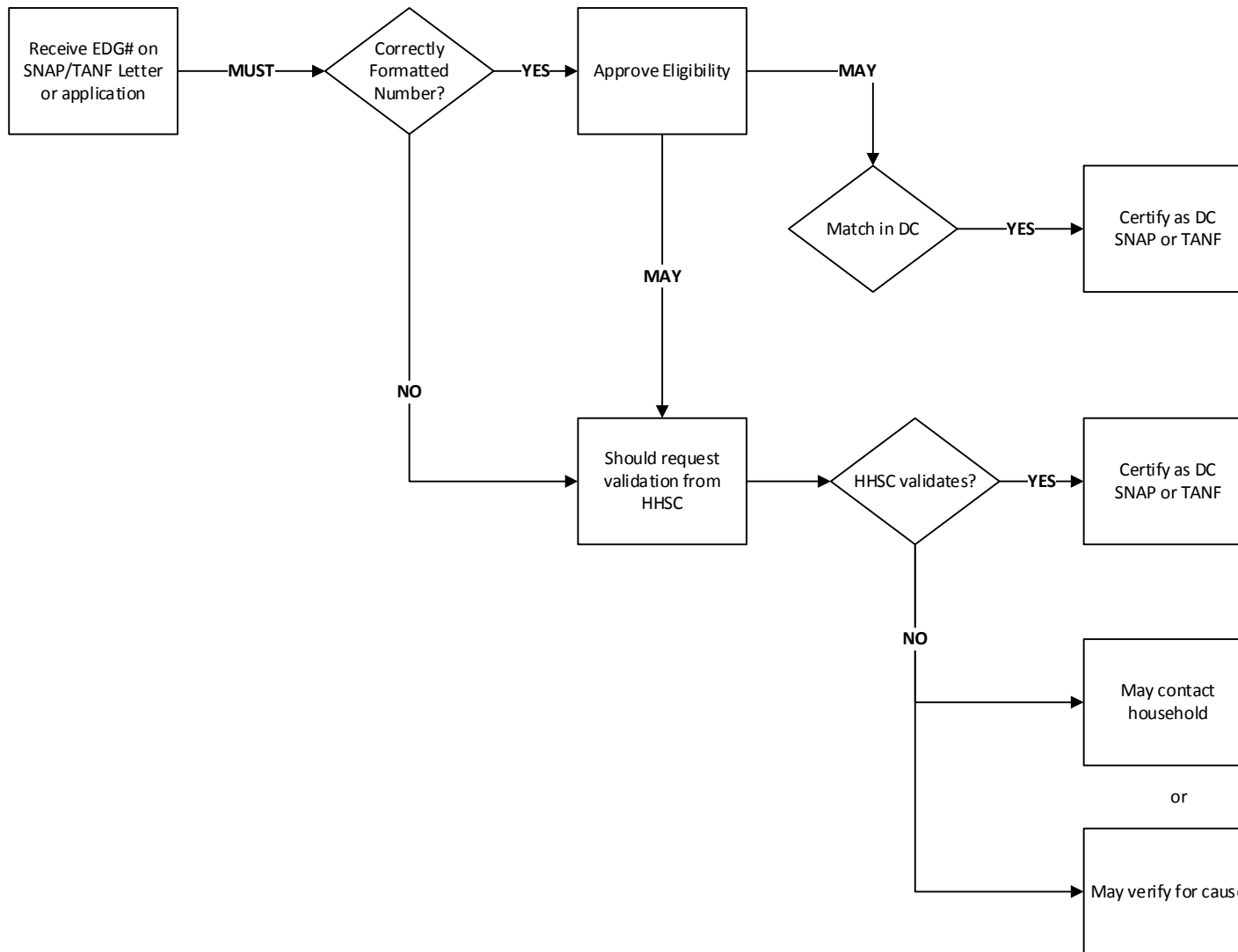


FIGURE 5: APPROVED APPLICATION IS NOW DC

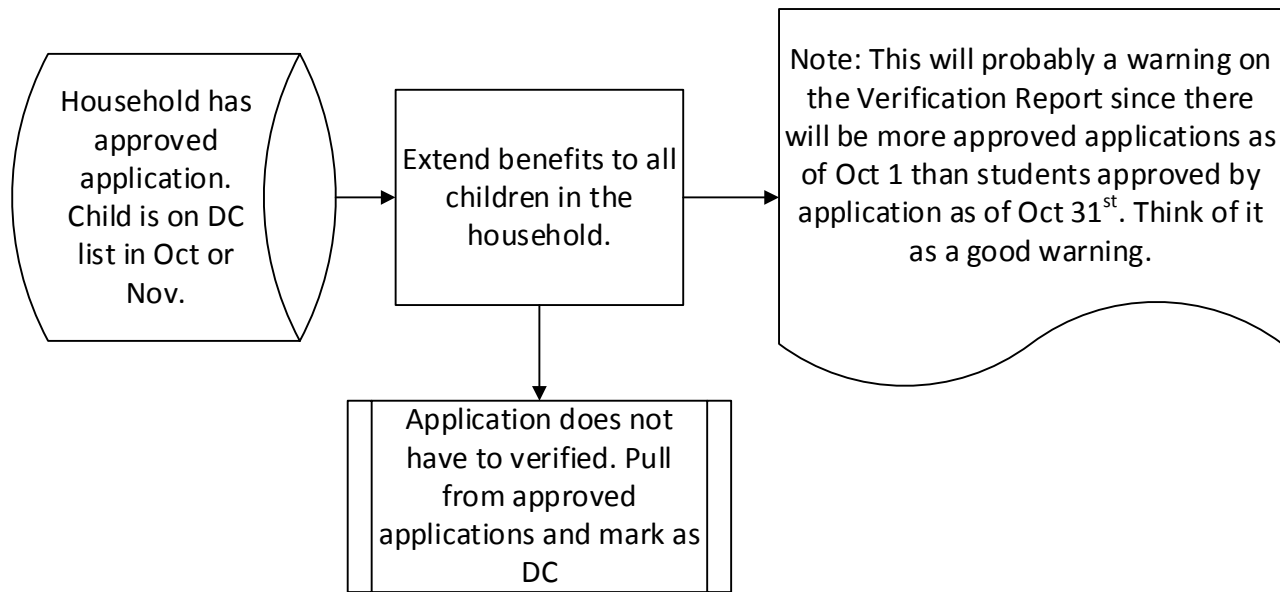


FIGURE 6: INACTIVE STUDENT WITH SIBLINGS ON DC LIST

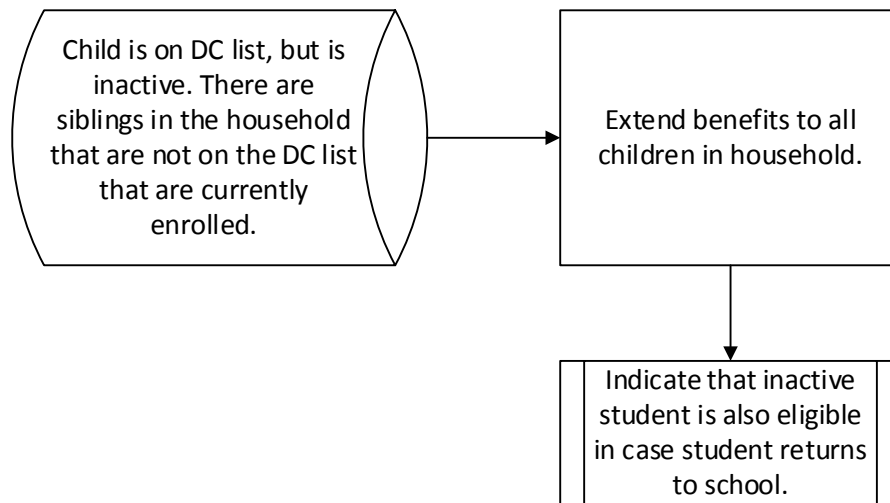


FIGURE 7: REQUIRED ACTIONS, VERIFICATION RESULTS

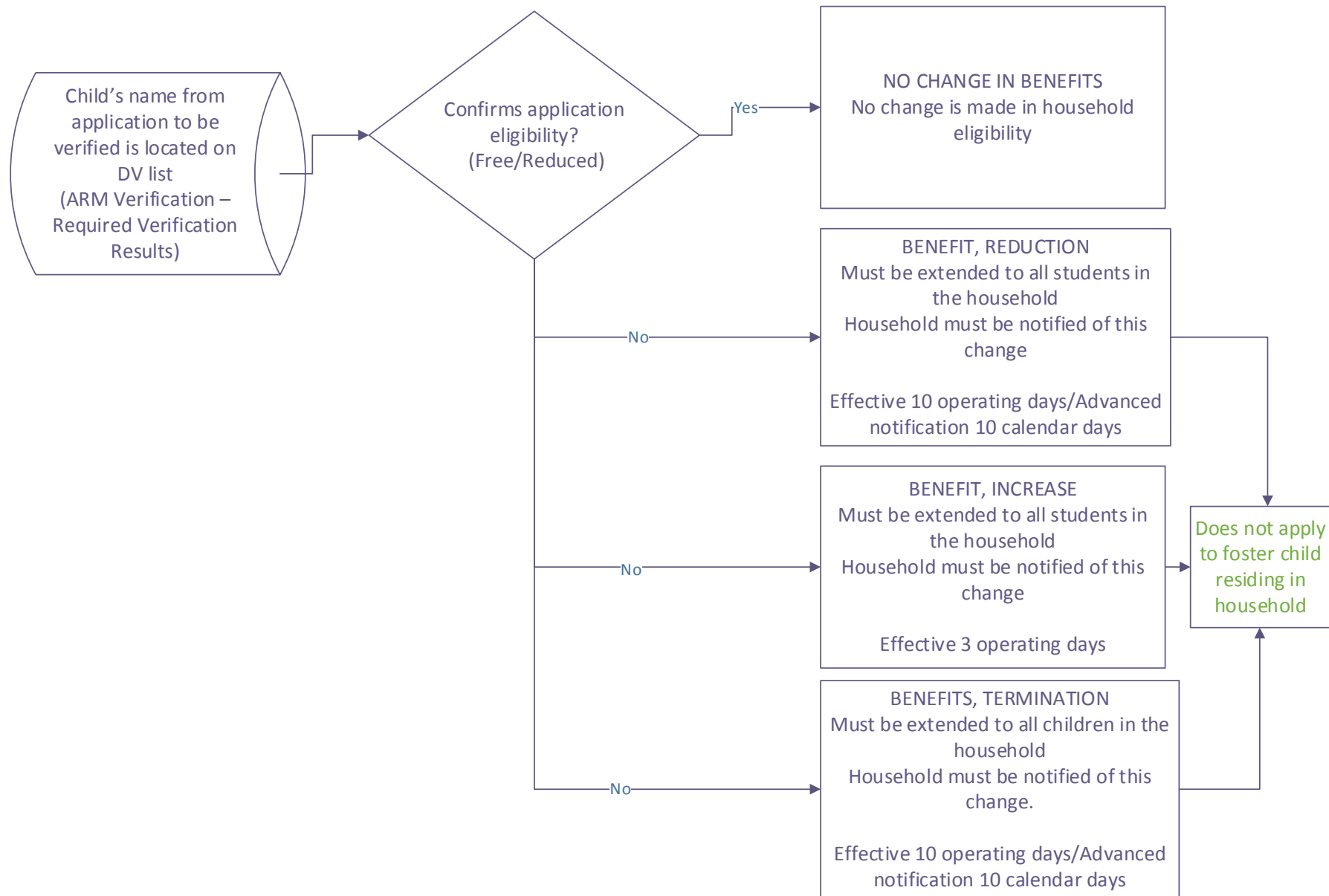


FIGURE 8: DETERMINE SAMPLE SIZE FOR MULTI-CAMPUS DISTRICT

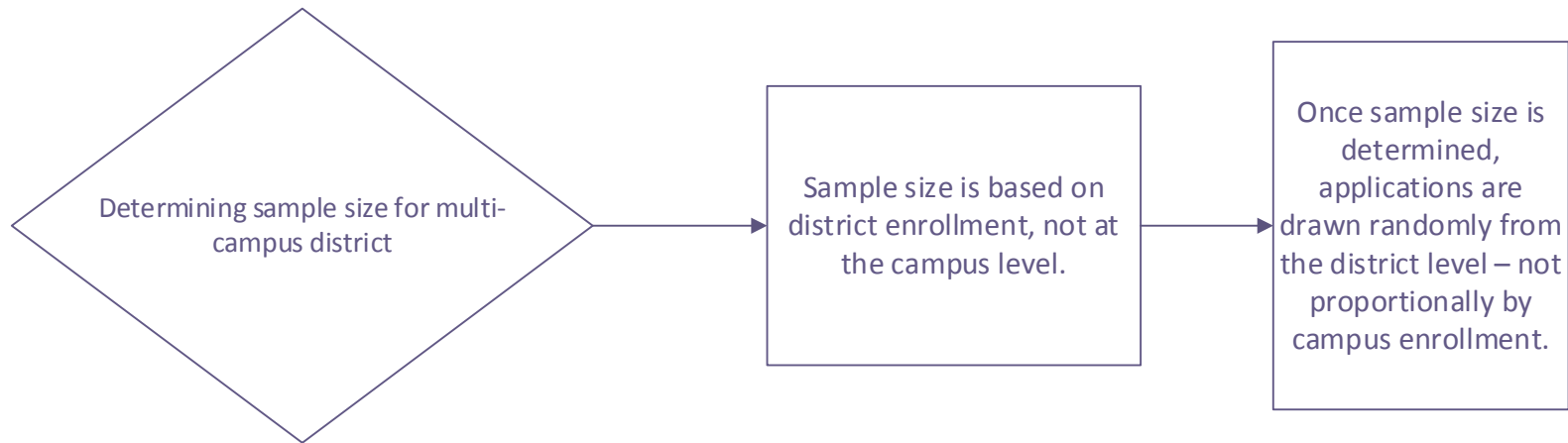
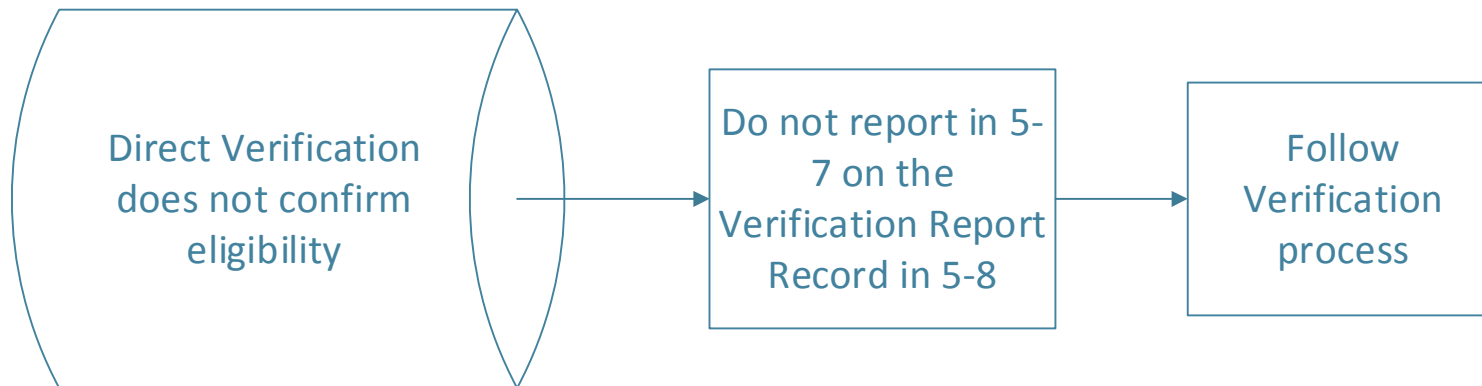


FIGURE 9: USING DV TO DETERMINE ELIGIBILITY



FIGURE 10: DV DOES NOT CONFIRM ELIGIBILITY



The Direct Verification process does not confirm the application status.

- Application shows eligibility as free, but DV shows eligibility is reduced.
- Application shows eligibility as reduced, but DV shows eligibility is free.

When reporting this on the Verification Report, do not include the application in the count on 5-7 “Confirmed through Direct Verification” because the eligibility was not confirmed.

Report in 5-8 Results of Verification by Original Benefit Type