



School Call

October 30, 2024

*Sarah Carlson, Isabella Cannon,
And Troy Warden, Assistant
Directors for School Operations*



TEXAS DEPARTMENT OF AGRICULTURE
COMMISSIONER SID MILLER

Fraud Hotline: 1-866-5-FRAUD-4 or 1-866-537-2834 | P.O. Box 12847 | Austin, TX 78711
Toll Free: (877) TEX-MEAL | For the hearing impaired: (800) 735-2989 (TTY)

This product was funded by USDA.
This institution is an equal opportunity provider.



Food and Nutrition Division
Nutrition Assistance Programs



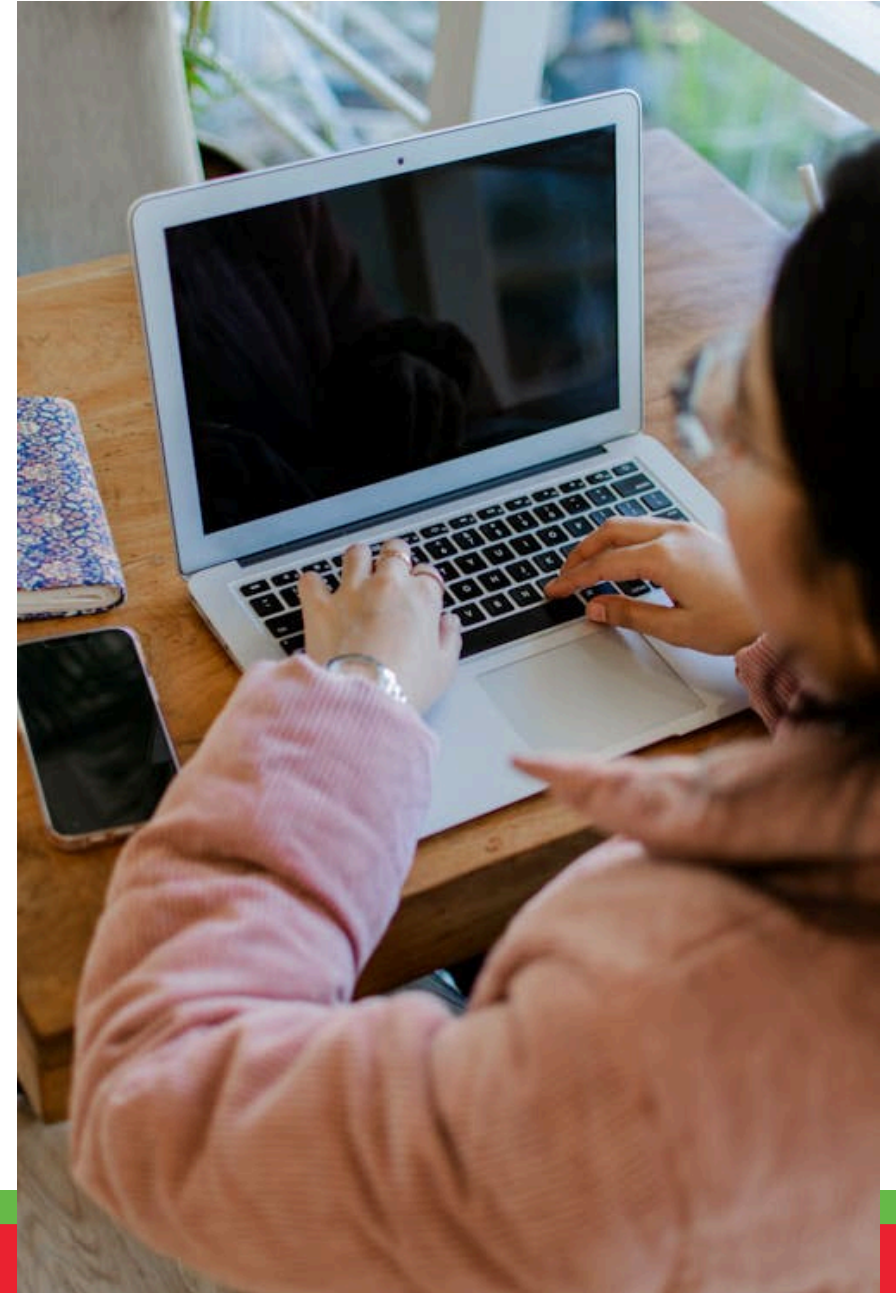
Updated 10/30/2024
www.SquareMeals.org

Agenda



Attachment B Uploads
Mathematica Survey
TEA Income Eligibility
Verification Extension
Verification Report
Common Findings

Attachment B Upload



Attachment B Upload

Opens: July 1, 2024

Closes: October 31, 2024

Submit:

- *School Meal Application*
- *Application Instructions*
- *Eligibility template letters*

Who must complete the Attachment B Upload:

- SFAs operating Standard Counting and Claiming (free, reduced, paid) at some or all schools.
- SFAs operating Universal Free at some or all schools.
- SFAs operating Provision 2 in the base year or CEP at some of their schools, but not all schools.
- RCCIs with day students.

134 Outstanding

Mathematica Survey



Mathematica Survey



USDA has sent out the 2024-2025 National School Foods Study being conducted by Mathematica. USDA has clarified that participation is required under Section 28 of the Richard B. Russell National School Lunch Act.

There may be special circumstances for some SFAs that impede ability to participate. In that case, please let USDA know, and USDA will determine whether to waive the SFA from the study.

TEA Income Eligibility Verification Extension



TEA Income Eligibility Verification

For the 2024-25 school year, the Texas Education Agency (TEA) is allowing schools to update their students' Economically Disadvantaged indicator until the PEIMS Fall Resubmission window closes on January 16, 2025. This means that school systems can continue to gather income verification for students after the 2024-25 Fall Snapshot date, October 25, 2024, however the verification must provide proof that the student met the criteria for Economically Disadvantaged status as of October 25, 2024. TEA is providing this extension due to the changes to the Medicaid participant list and its impact on Direct Certification.

This TEA update does not impact the verification timeline for the Child Nutrition Programs.



Verification Report



2024-2025 Verification Reporting Dates

October 1, 2024	Count of approved meal applications on file. Direct Verification (DV) module in TX-ELMS opens.
October 31, 2024	Count of students for the annual Verification Report
November 1, 2024	Verification Report opens – <u>https://form.jotform.com/241276986330159</u> CEs with no applications can begin submitting the Verification Report
November 15, 2024	Federal Deadline – Verification process completed CEs with applications can begin submission of Verification Report
November 26, 2024	CE Submission of the Verification Report is due in JotForm

**Link to SY 2024-2025 Verification Report JotForm will be in TX-UNPS
Applications>Download Forms>SNP 123**



Common Findings



2024-2025 Common Findings

Finding Question	Area	Question
126	100 - Certification and Benefit Issuance	Were all selected applications correctly approved?
410	400 - Meal Components & Quantities	a. Do planned menu quantities meet meal pattern requirements for the review period?
1005	1000 - Local School Wellness Policy	Provide a copy of the most recent assessment on the implementation of the local school wellness policy.
102	100 - General Procurement Procedures	Does the SFA/LEA's have documented Procurement Procedures? [2 CFR 200.318(a)]
1003	1000 - Micro Purchases	Did the SFA spread purchases equitably among all qualified sources? [2 CFR 200.320(a)]
2003	2000 - Small Purchases	Were price or rate quotations obtained from an adequate number (2 or more) of qualified sources? [2 CFR Part 200.320(b)/7 CFR 3016.36(d)(1)]
3104	3100 - Formal Contracts	Was cost/price analysis conducted to estimate the cost of goods or services prior to soliciting? [2 CFR 200.323/7 CFR 3016.36(f)]
4000	4000 - FSMC	Compliance with the 21-day menu
4001	4000 - FSMC	Were any material changes made to the contract that should have resulted in a rebidding of the contract? [NOTE: This includes changes in scope such as added programs, investments, adjustments not approved by the State agency.]
4004	4000 - FSMC	For all formal (IFB & RFP contracts): Did the SFA establish an advisory board composed of parents, teachers, and students to assist in menu planning? [7 CFR 210.16(a)(8)]
4005	4000 - FSMC	For all formal (IFB & RFP contracts): Did the SFA monitor the FSMC through periodic on-site monitoring? [7 CFR 210.16(a)(3)]
4008	4000 - FSMC	For all contracts, review three FSMC invoices to ensure the SFA is paying the FSMC as contracted. Is the SFA compliant with the contract payments using the nonprofit food service account?